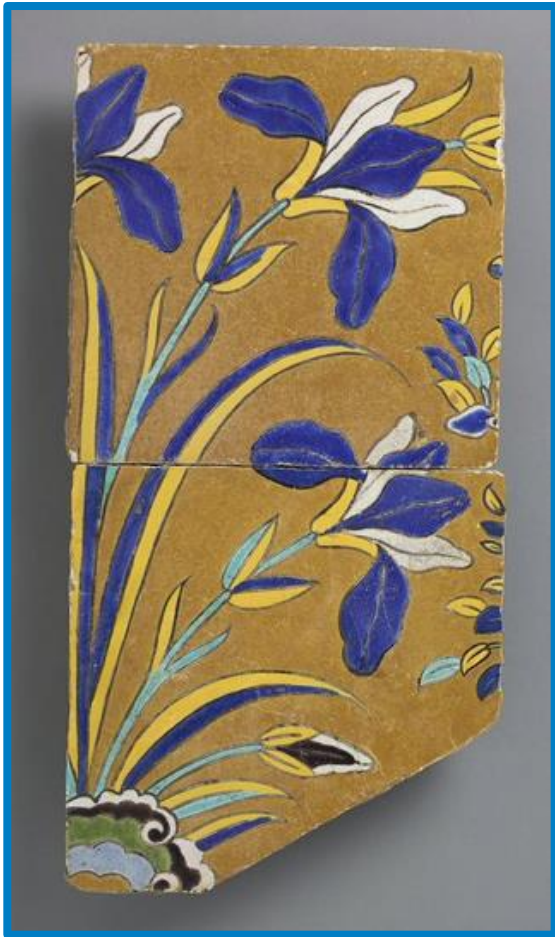


Look Closer: Hands-On Activity



DRAW YOUR FAVOURITE TILE

Look at these beautiful flowers on this tile. Do you know what they are called?

How do they make you feel?

The use of irises as garden plants dates back to more than 3000 years ago in Egypt and Syria; but they were growing naturally even earlier. It has various meanings in art across cultures.

This tile was part of a bigger tile panel that helped to decorate the inside of a palace.

Recent research by scholars and scientists helped us to understand more about the complete tile panel that these tiles once belonged to. Can you imagine how the rest of this tile panel might have looked like? **Tip:** it includes more irises and several peacocks!

Hands-On Activity

Materials: paper, pen, coloured pencils or markers

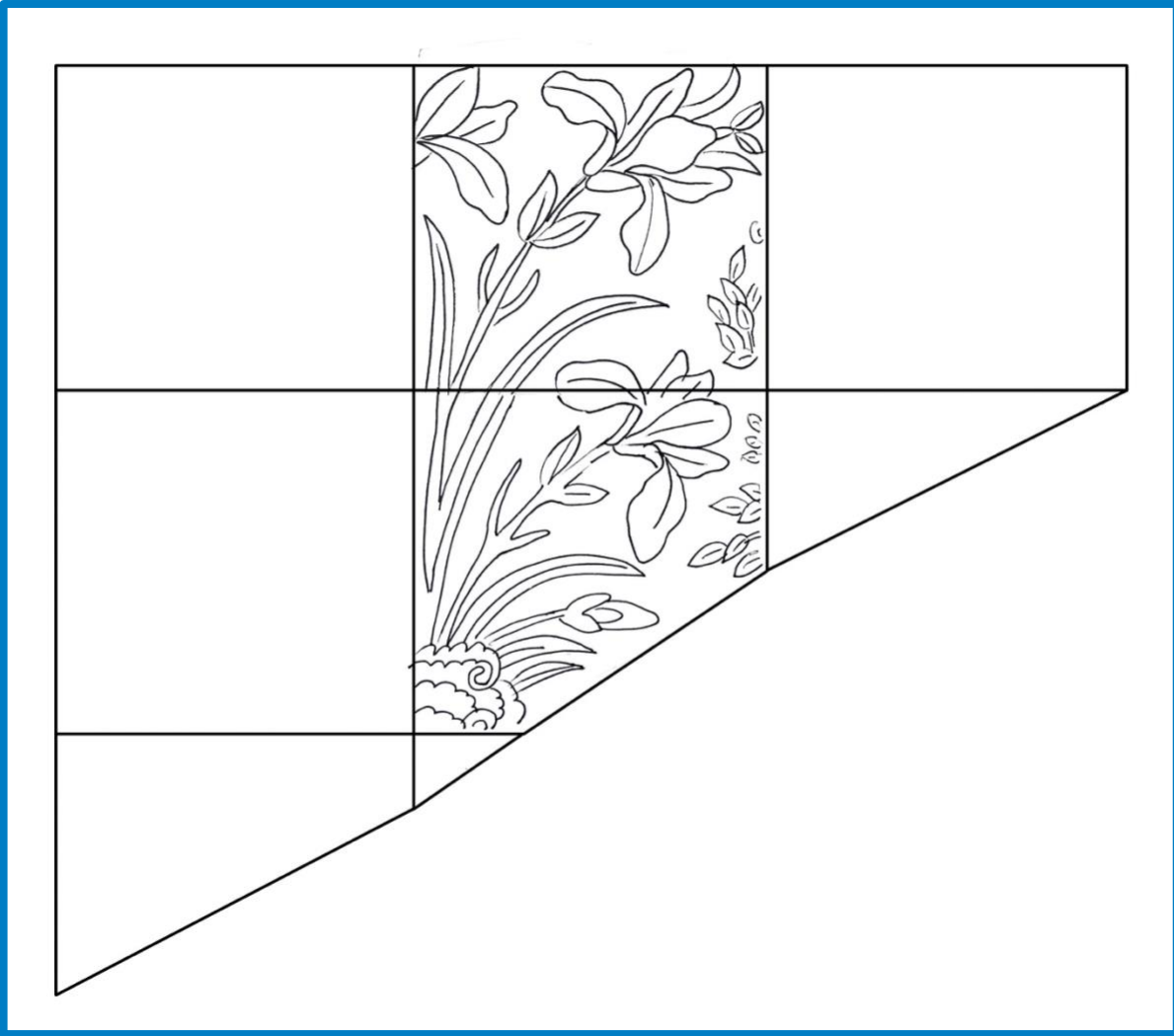
Imagine if this tile was part of a wall decoration in your room.

What would you like the rest of that tile panel to look like.

Draw and complete your favourite tile design using the template on the next page.

Image: **Tile Panel**, Iran, Isfahan, ca. 1660-70, terracotta, painted with coloured glazes on a white glaze, cuerda seca technique, H. 47.8 cm × W. 24 cm, AKM590





Once your activity is complete, take a photo and share it with us to this address:
learn@agakhanmuseum.org

Make sure your photo is 10 mg or smaller. Selected photos may be posted to the Aga Khan Museum's website or social channels.